

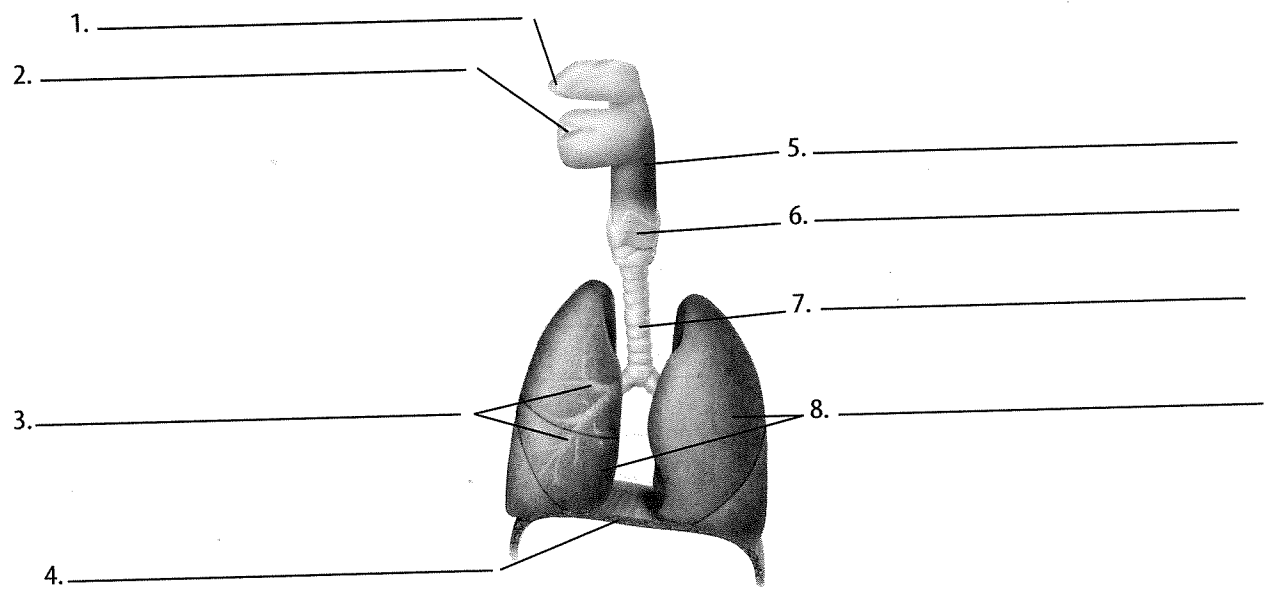
Content Practice A

LESSON 1

The Respiratory System

Directions: Label this diagram by writing the correct term from the word bank on each line.

- | | | | |
|---------|-----------|---------|---------|
| bronchi | diaphragm | larynx | lungs |
| mouth | nose | pharynx | trachea |



Directions: On the line before each definition, write the letter of the term that matches it correctly. Each term is used only once.

- | | |
|-------------------------------------------------------------|-----------------------|
| _____ 9. tubelike passageway at the top of the throat | A. lungs |
| _____ 10. flap of tissue at the lower end of the pharynx | B. pharynx |
| _____ 11. a triangle-shaped area that holds the vocal cords | C. alveoli |
| _____ 12. a tube that serves as the body's windpipe | D. bronchi |
| _____ 13. narrow tubes that lead into the lungs | E. trachea |
| _____ 14. the main organs of the respiratory system | F. epiglottis |
| _____ 15. small tubes of the respiratory system | G. bronchioles |
| _____ 16. microscopic sacs where gas exchange occurs | H. larynx |

Copyright © Glencoe/McGraw-Hill, a division of The McGraw-Hill Companies, Inc.

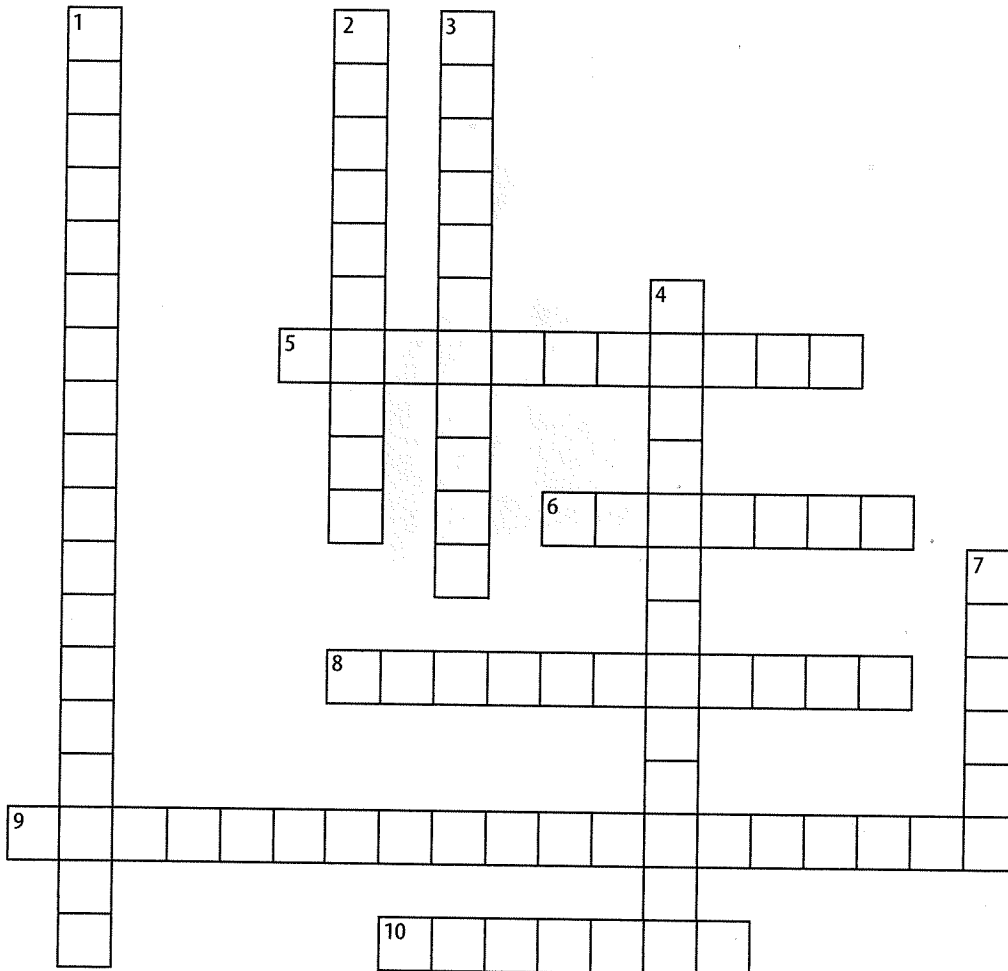
Content Practice B

LESSON 1

The Respiratory System

Directions: Use the clues and the terms listed below to complete the puzzle.

- bronchi bronchioles carbon dioxide cellular respiration homeostasis
 oxygen respiratory illness surface area trachea vocal chords



CLUES

Across

- 5. stability between working systems
- 6. narrow tubes leading to the lungs
cold, allergy, or asthma
- 8. small tubes in the lungs
- 9. release of energy from sugars
- 10. the windpipe

Down

- 1. a cold, allergy, or asthma
- 2. tissues that vibrate and make sound
- 3. enables a high rate of gas exchange
- 4. a waste product of cellular respiration
- 7. gas needed for cellular respiration