

Content Practice B

LESSON 2

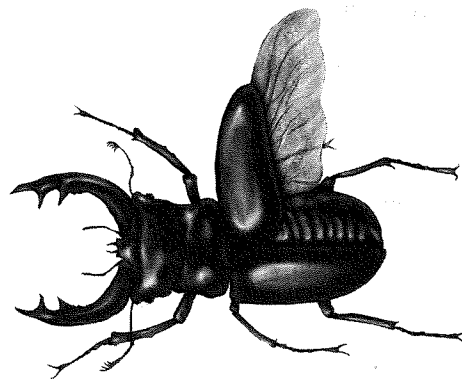
Invertebrate Phyla

Directions: Use the diagram to identify characteristics of each invertebrate. Write your answers on the lines provided.



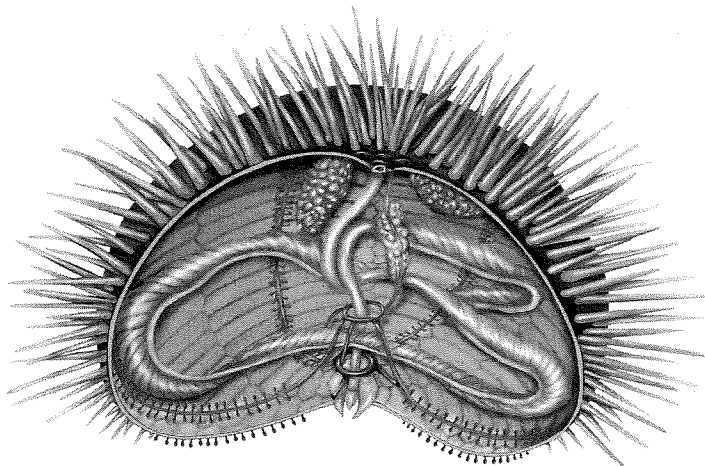
Sea Anemone

- 1. Phylum: _____
- 2. Symmetry: _____
- 3. Unique characteristic: _____



Beetle

- 4. Phylum: _____
- 5. Symmetry: _____
- 6. Unique characteristic: _____



Sea Urchin

- 7. Phylum: _____
- 8. Symmetry: _____
- 9. Unique characteristic: _____

Copyright © Glencoe/McGraw-Hill, a division of The McGraw-Hill Companies, Inc.

Key Concept Builder 

LESSON 2

Invertebrate Phyla

Key Concept How do the invertebrate phyla differ?

Directions: For each set of terms, identify the term that does not belong and explain why it doesn't.

1. cnidarians, jellyfish, sponges

2. platyhelminthes, radial symmetry, flatworms

3. hydras, nematocysts, roundworms

4. mollusks, octopi, leeches

5. slugs, snails, clams

6. shrimp, exoskeleton, jellyfish

7. crustaceans, arachnids, antennae

8. echinoderms, tube feet, crabs
